



  
Berza

Creiamo e progettiamo  
per persone che guardano avanti,  
che lavorano mettendoci ogni giorno  
la passione e l'amore  
che noi stessi riponiamo  
da oltre 30 anni.



Le immagini e le fotografie presenti nel catalogo, hanno il solo scopo di fornire una visione orientativa del prodotto. I colori e le lavorazioni dei materiali rappresentati devono essere considerati come indicazioni generali e approssimativamente del prodotto e non vincolanti rispetto al materiale consegnato.



**Art. Camicia  
KATE**

Col. Bianco  
95% cot. 5% el.  
Tg. S / XXL

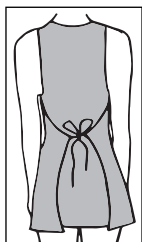
**Art. Camicia  
FLASH**

Col. Bianco  
95% cot. 5% el.  
Tg. S / XXL

**Art. MINA**  
Col. Ecopelle  
50% pol.  
50% vis.  
Tg. unica

**Art. DARIO**  
Col. Ecopelle  
50% pol. 50% vis.  
Tg. unica

**Art. SIMONA**  
Col. Jeans/pelle  
Jeans 65% pol. 35% cot.  
Ecopelle 50% pol. 50% vis.  
Tg. unica



**Art. Camicia KATE**

Col. Azzurro Oxford  
95% cot. 5% el.  
Tg. S / XXL

**Art. Camicia FLASH**

Col. Azzurro Oxford  
95% cot. 5% el.  
Tg. S / XXL



**Art. MINA**

Col. Jeans/Pelle  
Jeans 65%pol.  
35 % cot.  
Tg. unica

**Art. DARIO**

Col. Jeans/Pelle  
Jeans 65% pol.  
35% cot  
Tg. unica



**Art. Camicia  
KATE**

Col. Azzurro  
Oxford  
95% cot. 5% el.  
Tg. S / XXL

**Art. DEA**

Col. Crep marr.  
100 % pol.  
Tg. unica

**Art. Camicia  
FLASH**

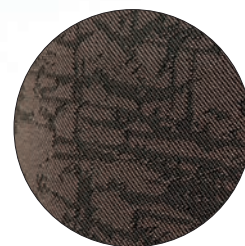
Col. Azzurro  
Oxford  
95% cot. 5% el.  
Tg. S / XXL

**Art. ZEUS**

Col. Crep marr.  
100 % pol.  
Tg. unica

**Art. MINECO**  
Col. Crep marrone  
100 % pol.  
Tg. unica

**Art. Polo  
FRANCIA  
DONNA**  
Col. Castoro  
90% cot.  
10% el.  
Tg.S / XXL



**Art. Polo  
FRANCIA UOMO**  
Col. Castoro  
90% cot. 10% el.  
Tg. M / XXL



**Art. BRIECO**  
Col. Crep marrone  
100 % pol.  
Tg. unica



**Art. Polo  
FRANCIA  
DONNA**

Col. Castoro  
90% cot.  
10% el.  
Tg. S / XXL



**Art. DOUBLE**  
Col. Crep marrone  
Col. Crep zucca  
100 % pol.  
Tg. unica

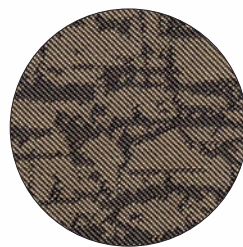
**Art. Polo  
FRANCIA DONNA**

Col. Marrone  
90% cot. 10% el.  
Tg. S / XXL



Art. Polo  
**FRANCIA DONNA**

Col. Marrone  
90% cot. 10% el.  
Tg. S / XXL



Art. **DOUBLE**

Col. Crep ecrù  
100 % pol.  
Tg. unica



**Art. Camicia KATE**

Col. Marrone  
65% pol. 35%cot  
Tg. S / XXL

**TESSUTO  
ANTIMACCHIA**

**Art. Camicia FLASH**

Col. Marrone  
65% pol. 35%cot  
Tg. S / XXL

**TESSUTO  
ANTIMACCHIA**

**Art.**

**MINECO**

Col. Crep ecru  
100 % pol.  
Tg. unica

**Art. BRIECO**

Col. Crep ecru  
100 % pol.  
Tg. unica

Art. **TASCA**  
**INTERCAMBIABILE**  
Col. Crep marrone / crep  
zucca / ecopelle / crep  
ecrù



**Art. Camicia KATE**

Col. Marrone  
65% pol. 35%cot  
Tg. S / XXL

**TESSUTO  
ANTIMACCHIA**

**Art. Camicia FLASH**

Col. Marrone  
65% pol. 35%cot  
Tg. S / XXL

**TESSUTO  
ANTIMACCHIA**



**Art. DEA**

Col. Crep ecrù  
100 % pol.  
Tg. unica

**Art. ZEUS**

Col. Crep ecrù  
100 % pol.  
Tg. unica

Art. Camicia

**KATE**

Col. Marrone

65% pol. 35%cot

Tg. S / XXL

**TESSUTO**

**ANTIMACCHIA**

Art. Camicia **FLASH**

Col. Marrone

65% pol. 35%cot

Tg. S / XXL

**TESSUTO**

**ANTIMACCHIA**



Art. **DEA**

Col. Crep

zucca

100 % pol.

Tg. unica

Art. **ZEUS**

Col. Crep zucca

100 % pol.

Tg. unica



Art. Polo  
**FRANCIA DONNA**

Col. Marrone  
90% cot. 10% el  
Tg. S / XXL

Art. Polo  
**FRANCIA UOMO**

Col. Marrone  
90% cot. 10% el  
Tg. M / XXL



Art.  
**MINECO**

Col. Crep zucca  
100 % pol.  
Tg. unica

Art. **BRIECO**

Col. Crep zucca  
100 % pol.  
Tg. unica

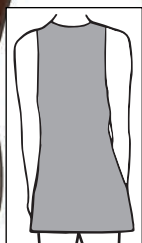
Art. Smanicato

**PETRA**

Col. Crep fuxia

100 % pol.

Tg. unica

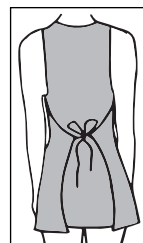


Art. FRECCIA

Col. Crep fuxia

100 % pol.

Tg. unica





**Art. Polo**  
**FRANCIA DONNA**

Col. Marrone  
90% cot. 10% el  
Tg. S / XXL

**Art. DEA**

Col. Crep  
fuxia  
100 % pol.  
Tg. unica

**Art. DOUBLE**

Col. Crep fuxia  
100 % pol.  
Tg. unica

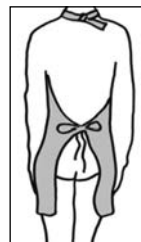




**Art. Polo**  
**FRANCIA DONNA**  
Col. Marrone  
90% cot. 10% el  
Tg. S / XXL



**Art. MINECO**  
Col. Crep fuxia  
100 % pol.  
Tg. unica



**Art. Camicia LIZ**

Col. Nero  
65% pol.  
35% cot.  
Tg. S / XXL

**TESSUTO  
ANTIMACCHIA**

**Art. Camicia LIZ**

Col. Bianco  
95 % cot. 5 % el.  
Tg. S / XXL





**Art. Camicia  
KATE**

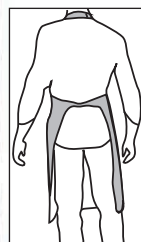
Col. Bianco  
95% cot. 5% el.  
Tg. S / XXL

**Art. Camicia  
FLASH**

Col. Bianco  
95% cot. 5% el.  
Tg. S / XXL

**Art. MINECO**  
Col. Punto nero  
100 % pol.  
Tg. unica

**Art. BRIECO**  
Col. Punto nero  
100 % pol.  
Tg. unica



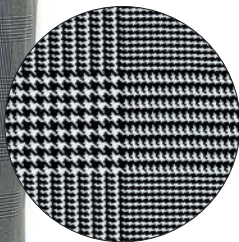


**Art. Camicia  
KATE**  
Col. Bianco  
95% cot. 5% el.  
Tg. S / XXL

**Art. Camicia  
FLASH**  
Col. Nero  
65% pol. 35%cot  
Tg. S / XXL  
**TESSUTO  
ANTIMACCHIA**

**Art. MINA  
PRINCE**  
Col. P.g.n.  
100% pol  
Tg. unica

**Art. DARIO  
PRINCE**  
Col. P.g.n.  
100% pol.  
Tg. unica



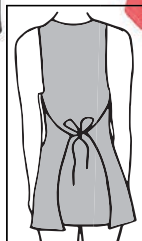
**Art. FRECCIA**

Col. Nero  
100 % pol.  
Tg. unica



**Art. FRECCIA**

Col. Corallo  
100 % pol.  
Tg. unica





Art. Smanicato

**PETRA**

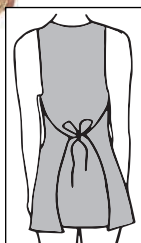
Col. Nero  
100 % pol.  
Tg. S / XXL



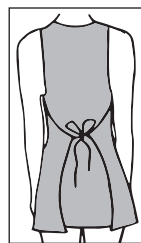
Art. SIMONA  
Col. J. Pink  
100 % pol.  
Tg. Unica



Art. SIMONA  
Col. Gold  
100 % pol.  
Tg. unica



Art. **SIMONA**  
Col. Nero  
100 % pol.  
Tg.Unica



**Art. GEISHA**  
Col. Nero  
65% pol 35% cot  
Tg. S-M-L  
**TESSUTO**  
**ANTIMACCHIA**



**Art. GEISHA**  
Col.bianco  
65% pol 35% cot  
Tg. S-M-L



**Art. GEISHA**  
Col. Marrone  
65% pol 35% cot  
Tg. S-M-L  
**TESSUTO**  
**ANTIMACCHIA**



**Art. LEGGINS**  
Col. Nero  
90% cot. 10% el.  
Tg. S / XXL

Art. **MAGLIA  
DONNA**

Col. Banco / Nero  
90% cot. 10% el.  
Tg. M / XXL

Art. **GILET SHORT**

Col. Nero  
Microf. 100% pol.  
Tg. S-M / L-XL

**TESSUTO  
ANTIMACCHIA**

Art. **GILET LONG**

Col. Nero  
Microf. 100% pol.  
Tg. S-M / L-XL

**TESSUTO  
ANTIMACCHIA**



Art. **LEGGINS**

Col. Bianco  
90% cot. 10% el.  
Tg. S / XXL

**Art. STELLA**  
Col. Nero  
100% pol.  
Tg. S / XXL



**Art. MAGLIA  
MICRO DONNA**

Col. Nero  
Microfibra  
100% pol.  
Tg. S / XXL

**TESSUTO  
ANTIMACCHIA**



**Art. MAGLIA  
MICRO UOMO**

Col. Nero  
Microfibra 100% pol.  
Tg. S / XXL

**TESSUTO  
ANTIMACCHIA**





**Art. MAGLIA DONNA**

Col. Bianco / Nero  
90% cot. 10% el.  
Tg. M / XXL



**Art. PALAZZO**

Col. Nero  
Microfibra 100% pol.  
Tg. S / XXL

**TESSUTO  
ANTIMACCHIA**

Art. **GIACCA FEDERICO**  
**MAGLIA UOMO**

Col. Bianco  
65% pol. 35% cot  
Tg. S / XXL



Art. **PANTALONE NEW**

Col. Riga bianco-nera  
65% pol. 35% cot.  
Tg. S / XXL

Art. **CALZATURA ITALIA S2**

Col. Nero / Bianco  
Tg. 35 - 48

# SHOP



Col. Crep ecru



Col. Crep zucca



Col. P.g.n.



Col. Jeans / Pelle



Col. Crep marrone



Col. Ecopelle

# VASCO



Col. Crep fuxia



Col. Marrone / Ecopelle



Col. Jeans / Ecopelle

# UGO



Col. Marrone / Ecopelle

# PAPILLON



Col. Ecopelle



Col. P.g.n.



Via Roma, 299 - 35020 Albignasego (PD) Italy  
Ph. +39 049 8626209 - Fax +39 049 8626221  
[www.berza.it](http://www.berza.it) - [info@berza.it](mailto:info@berza.it)